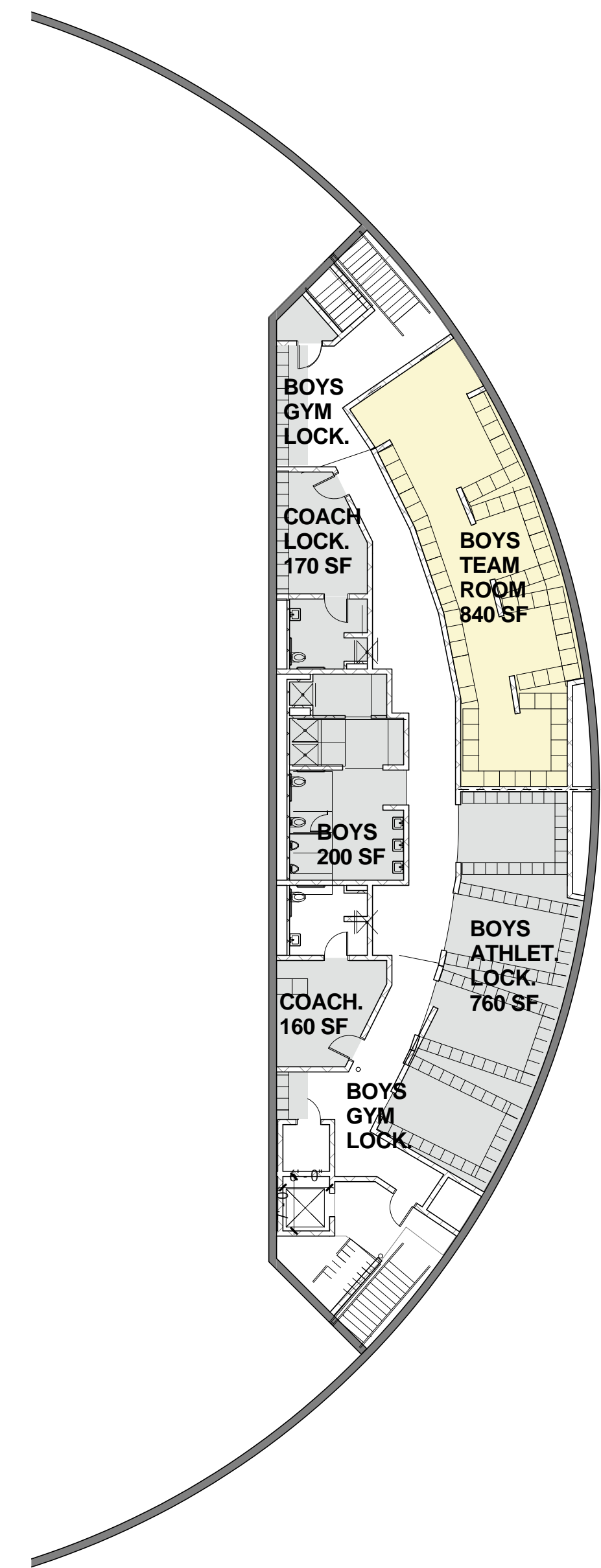
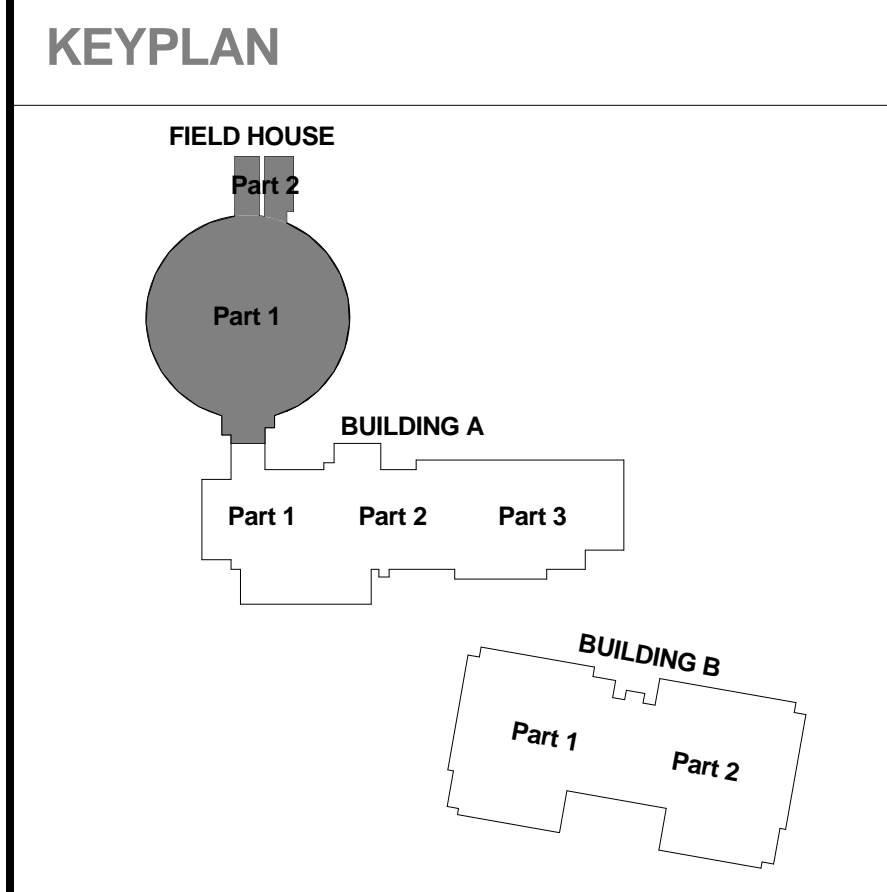


FIELD HOUSE- FIRST FLOOR PLAN



FIELD HOUSE- LOWER FLOOR PLAN

- LEGEND**
- Administration
 - Community / Shared
 - Core Academic Spaces
 - Technology
 - Support
 - Circulation



REVISIONS NO.	DATE	REMARKS	BY

HMFH Architects, Inc.
120 Fishergate Drive
Weyland, Massachusetts 01981
Tel: 617.672.2000
Fax: 617.672.2000
www.hmfh.com

architecture ■ programming ■ master planning

SITE PLAN REVIEW & APPROVAL
02/22/2010

Weyland High School
Weyland, Massachusetts
Field House- Illustrated Floor Plans
SCALE: 1/16" = 1'-0" DRAWN BY: Author CHECKED BY: Checker

A
A2.2

JOB NUMBER 426409