

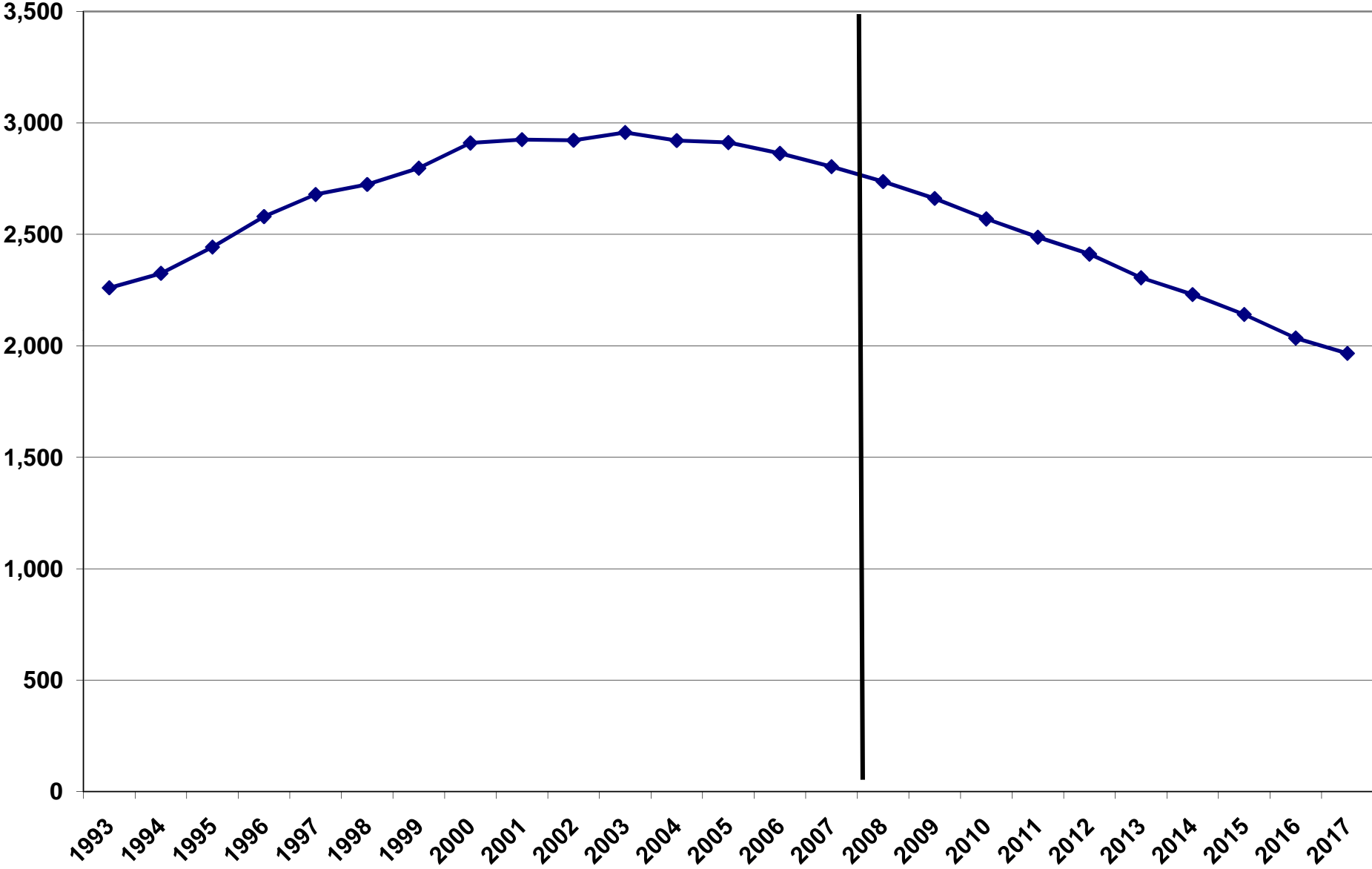
## MA Enrollment Projection-WAYLAND

	K	1	2	3	4	5	6	7	8	9	10	11	12	Total
1993	202	182	202	192	193	169	178	158	197	147	147	143	150	2,260
1994	205	214	189	211	192	196	173	180	156	184	139	144	142	2,325
1995	219	223	218	189	213	196	198	184	184	160	175	134	150	2,443
1996	242	228	228	229	200	217	207	202	185	182	153	175	132	2,580
1997	223	253	225	230	229	204	220	209	204	176	179	154	173	2,679
1998	219	227	245	232	230	225	209	223	203	199	176	175	161	2,724
1999	211	234	233	237	235	239	227	205	220	204	198	173	181	2,797
2000	232	219	241	242	244	251	245	228	207	220	207	202	172	2,910
2001	186	245	221	249	241	242	262	244	231	206	214	193	191	2,925
2002	194	191	244	231	248	238	246	254	248	226	198	212	192	2,922
2003	204	217	200	251	224	247	233	247	257	240	225	203	209	2,957
2004	169	221	217	207	258	231	240	241	242	236	240	218	201	2,921
2005	186	187	232	219	201	253	233	243	244	231	234	234	215	2,912
2006	194	194	186	235	214	201	253	225	242	230	224	228	237	2,863
2007	172	205	203	194	231	209	205	248	223	242	221	225	226	2,804
2008	156	186	211	208	191	230	208	205	248	213	238	219	223	2,737
2009	148	169	191	216	205	191	229	208	205	237	210	236	217	2,661
2010	125	160	174	196	213	205	190	229	208	196	233	208	234	2,569
2011	154	135	164	178	193	212	204	190	229	199	192	230	206	2,487
2012	131	166	139	169	176	193	211	204	189	219	195	190	229	2,412
2013	123	142	171	143	166	175	192	211	203	181	215	193	189	2,305
2014	114	133	146	175	141	166	174	192	211	194	178	213	192	2,230
2015	106	124	137	150	173	140	165	174	191	202	191	176	212	2,140
2016	109	114	127	140	147	172	140	165	174	183	198	189	175	2,035
2017	109	118	117	130	138	147	172	140	165	166	180	196	188	1,966

**Projection generated using the following information:**

Ratio used: 5-yr average. Notes state that 100 2BR residential units are possible in Mixed Use Overlay at Town Center, but we have not taken these into account as they are not reflected in planned units for 2008 or 2009.

# Wayland Total Enrollment



## MA Enrollment Projection-WAYLAND

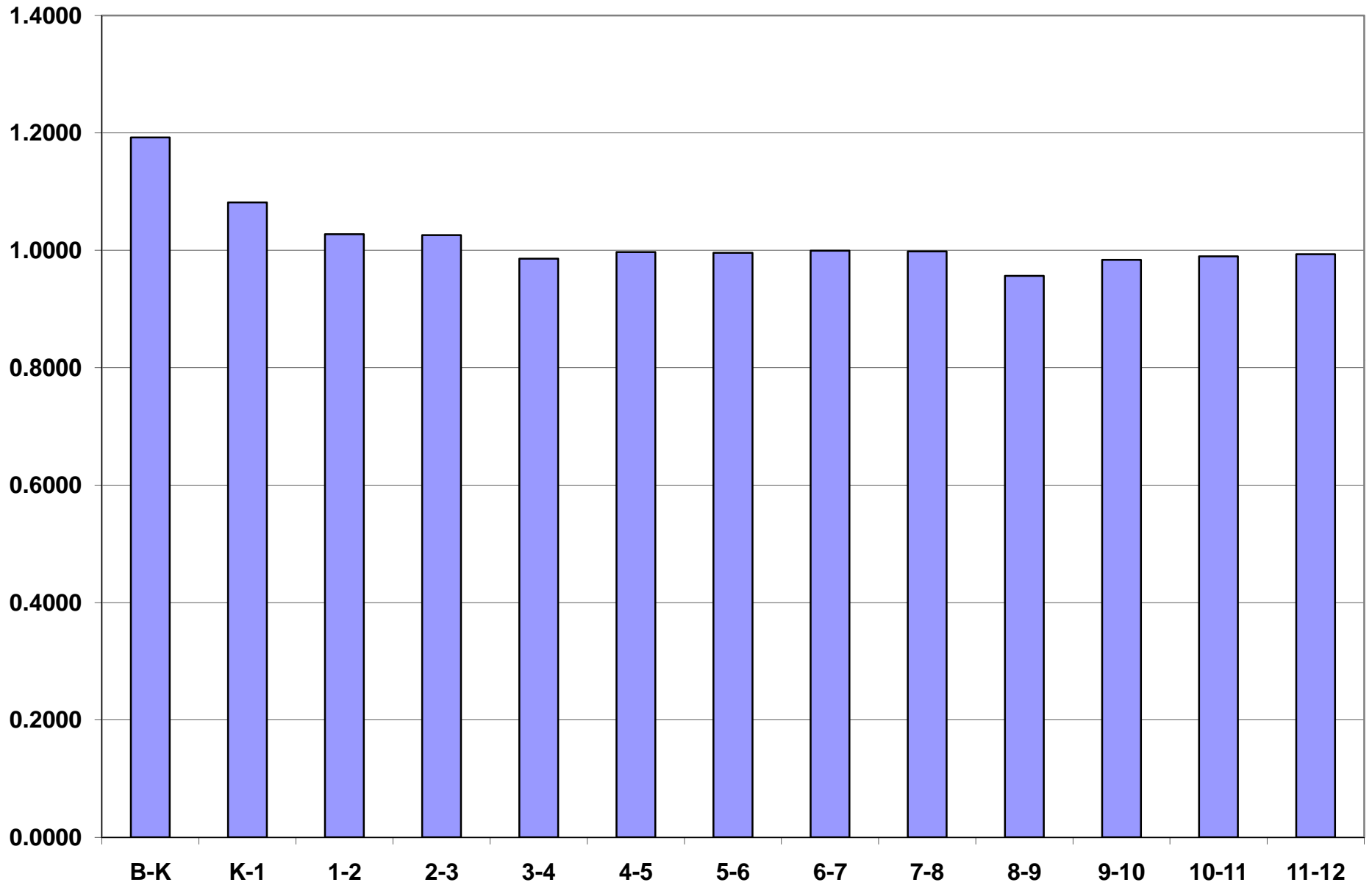
### Enrollment Grouped by Grades

	K-5	6-8	9-12
1993	1,140	533	587
1994	1,207	509	609
1995	1,258	566	619
1996	1,344	594	642
1997	1,364	633	682
1998	1,378	635	711
1999	1,389	652	756
2000	1,429	680	801
2001	1,384	737	804
2002	1,346	748	828
2003	1,343	737	877
2004	1,303	723	895
2005	1,278	720	914
2006	1,224	720	919
2007	1,214	676	914
2008	1,183	661	894
2009	1,120	642	899
2010	1,072	627	870
2011	1,037	622	828
2012	973	604	834
2013	920	607	779
2014	875	577	778
2015	829	531	781
2016	810	478	746
2017	759	476	731

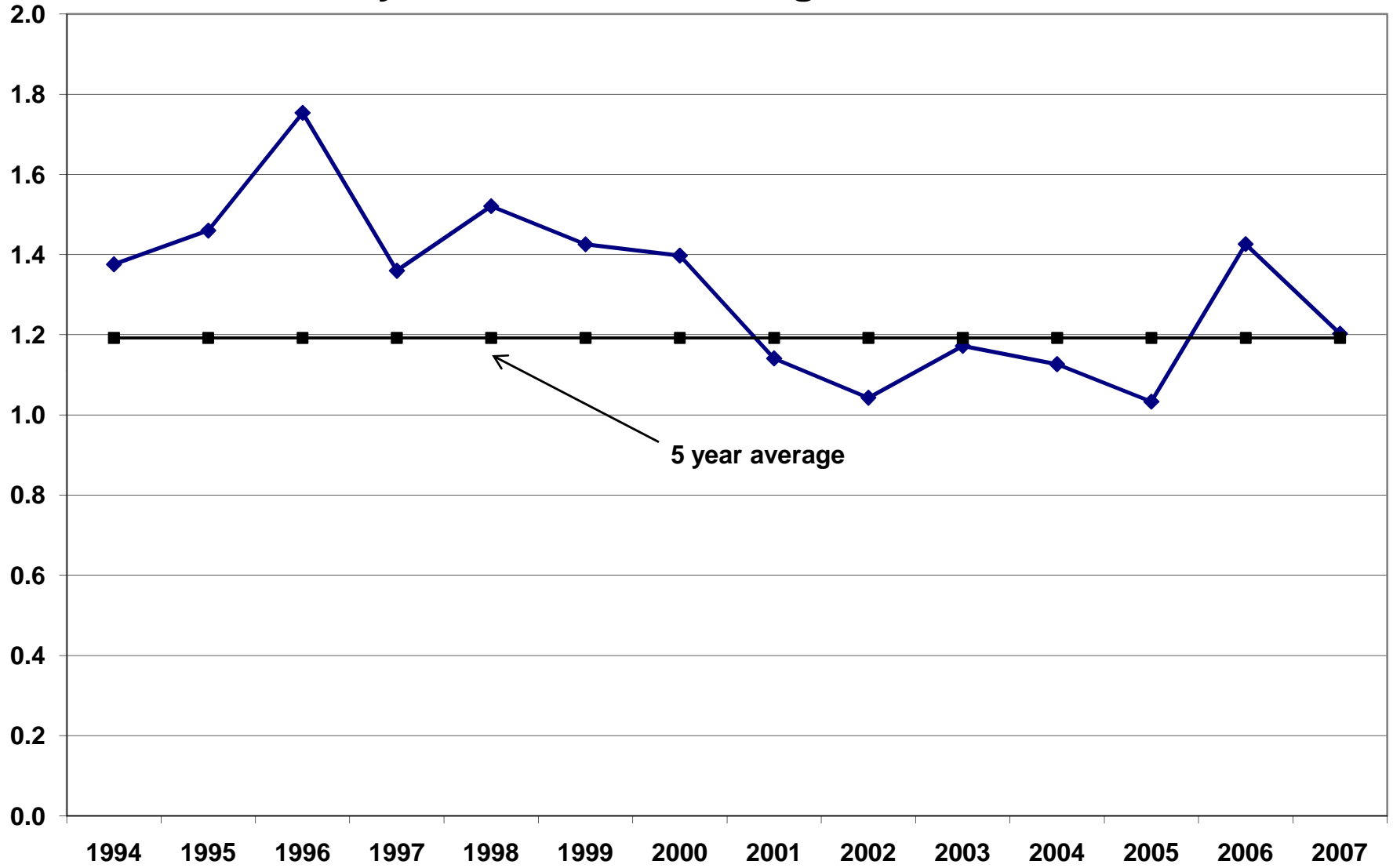
**Projection generated using the following information:**

Ratio used: 5-yr average. Notes state that 100 2BR residential units are possible in Mixed Use Overlay at Town Center, but we have not taken these into account as they are not reflected in planned units for 2008 or 2009.

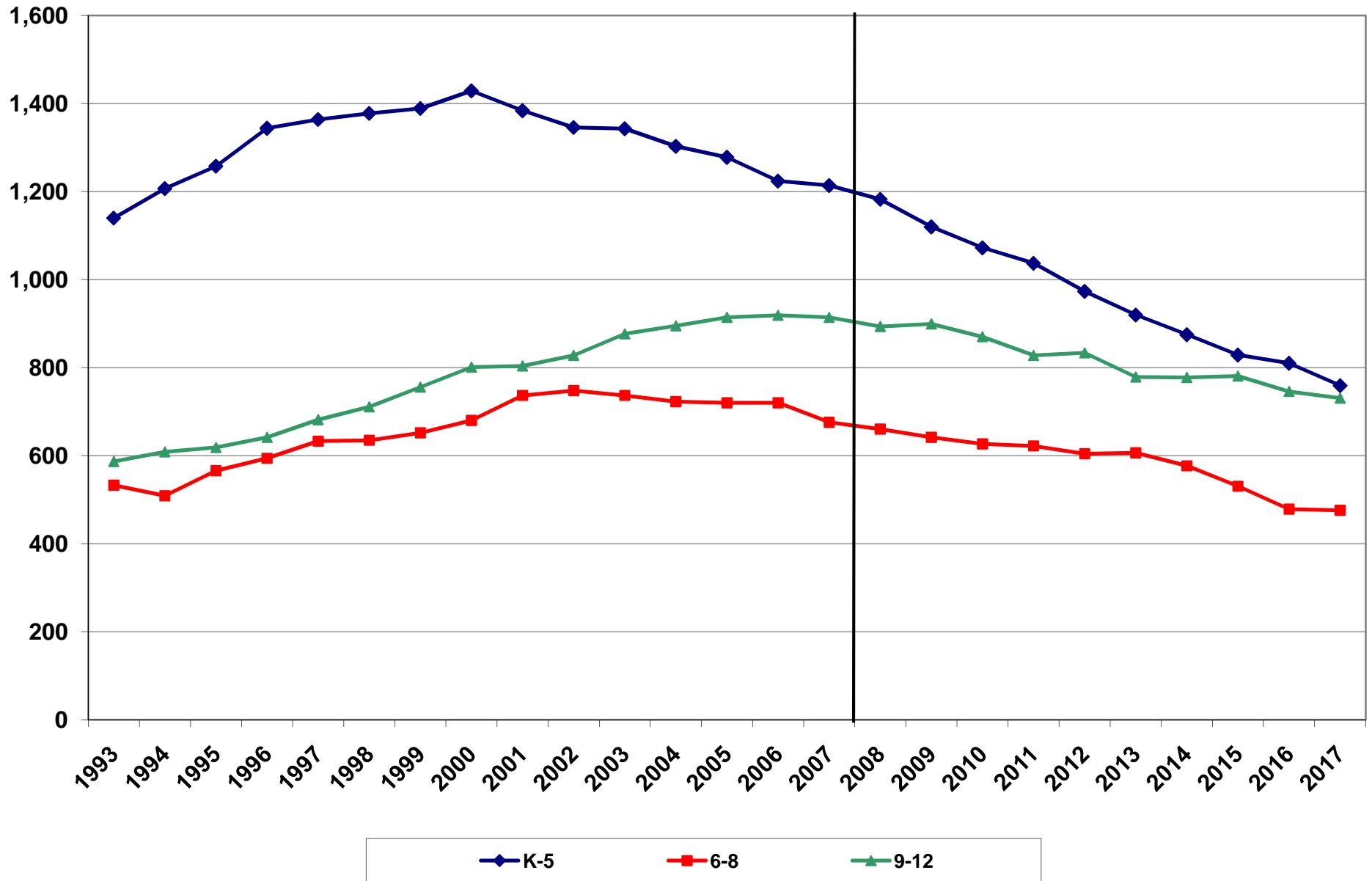
# Wayland Grade-to-Grade Ratios - 5 Yr Average



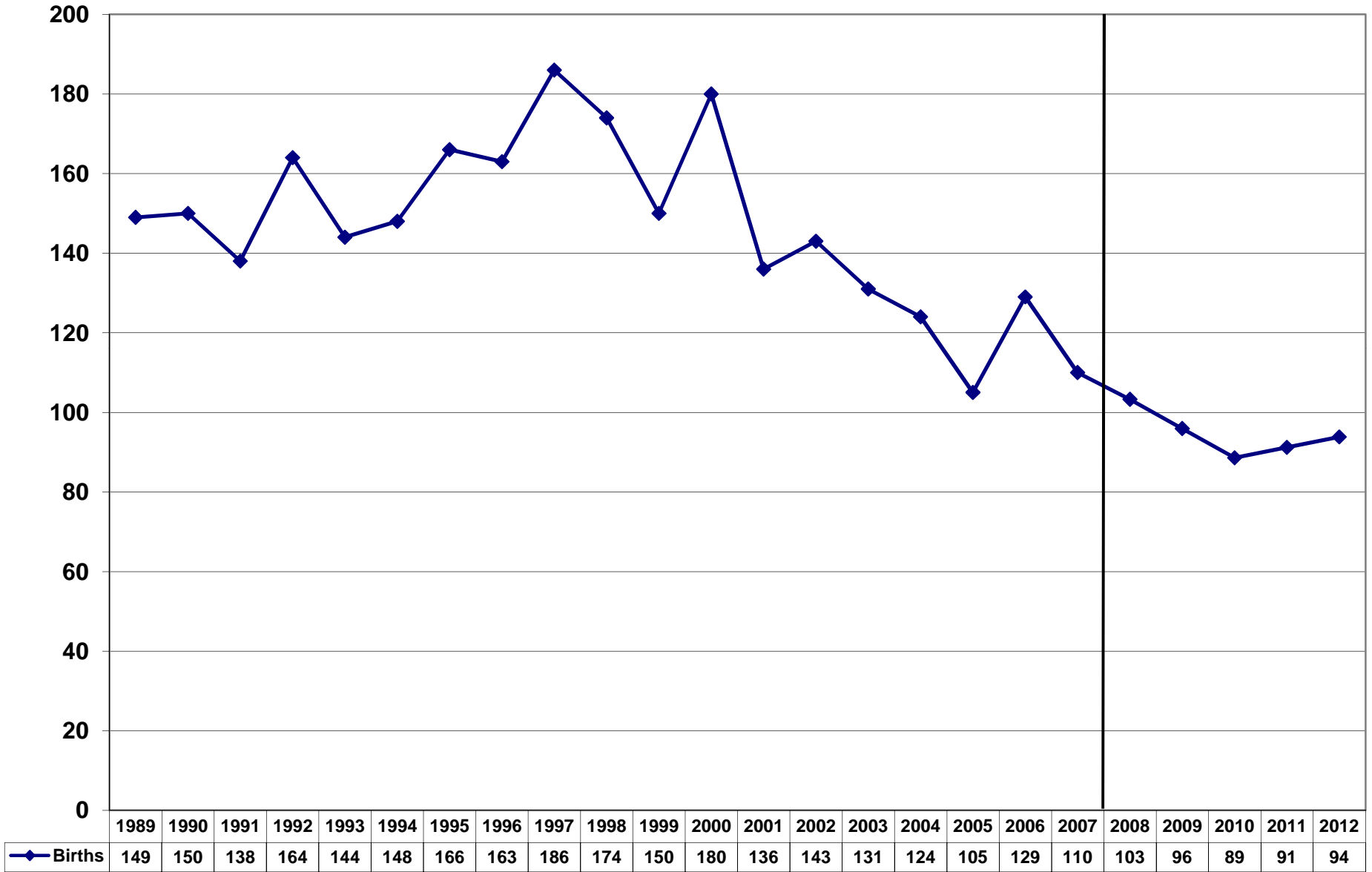
# Wayland Birth to Kindergarten Ratio



# Wayland Enrollment by Grade Group



# Births in Wayland



### Birth Projection-Wayland

**BIRTHS - Wayland**

Maternal Age	BIRTHS - PROJECTION															BIRTHS - PROJECTION								
	1990	1991	1992	1993	1994	1995	1996	1997	1998	1999	2000	2001	2002	2003	2004	2005	2006	2007	2008	2009	2010	2011	2012	2020
10-14 Yrs																		0	0	0	0	0	0	0
15-19 Yrs	0	0	0	0	0	0	0	0	0	0	0	0	0	0	0	0	0	0	0	0	0	0	0	0
20-24 Yrs	9	0	0	0	0	0	0	0	0	0	0	0	0	0	0	0	5	0	0	0	0	0	0	0
25-29 Yrs	24	30	40	22	26	25	23	15	16	16	15	15	11	9	10	8	11	15	16	16	16	16	17	
30-34 Yrs	72	62	64	74	68	72	67	87	82	58	69	50	61	69	50	53	54	42	38	35	31	34	36	
35-39 Yrs	36	37	51	42	54	56	61	75	69	58	77	49	56	42	51	34	38	43	40	36	33	33	33	
40-44 Yrs	8	8	9	6	0	13	12	9	7	19	18	21	15	11	12	9	21	10	10	9	9	8	8	
Total Births	150	138	164	144	148	166	163	186	174	150	180	136	143	131	124	105	129	111	103	96	89	91	94	

**FEMALE POPULATION - Wayland**

Maternal Age	1990	1991	1992	1993	1994	1995	1996	1997	1998	1999	2000	2001	2002	2003	2004	2005	2006	2007	2008	2009	2010	2011	2012	2020
10-14 Yrs	369	385	402	418	434	451	467	483	499	516	532	535	537	540	542	545	547	550	552	555	557	546	534	444
15-19 Yrs	337	339	341	343	345	347	348	350	352	354	356	371	386	401	416	431	445	460	475	490	505	486	467	315
20-24 Yrs	290	274	258	242	226	210	193	177	161	145	129	139	148	158	168	178	187	197	207	216	226	227	228	236
25-29 Yrs	254	244	234	223	213	203	193	183	172	162	152	152	153	153	154	154	154	155	155	156	156	163	169	222
30-34 Yrs	423	411	400	388	376	365	353	341	329	318	306	290	274	258	242	226	209	193	177	161	145	156	167	253
35-39 Yrs	551	557	563	569	575	581	587	593	599	605	611	580	549	517	486	455	424	393	361	330	299	300	301	307
40-44 Yrs	649	649	648	648	647	647	646	646	645	645	644	621	599	576	553	531	508	485	462	440	417	395	373	197
Total Females	6,111	6,179	6,246	6,314	6,382	6,450	6,517	6,585	6,653	6,720	6,788	6,751	6,713	6,676	6,638	6,601	6,564	6,526	6,489	6,451	6,414	6,342	6,323	5,694

**FERTILITY RATE - Wayland**

Maternal Age	1990	1991	1992	1993	1994	1995	1996	1997	1998	1999	2000	2001	2002	2003	2004	2005	2006	2007	2008	2009	2010	2011	2012	2020
10-14 Yrs	0.00%	0.00%	0.00%	0.00%	0.00%	0.00%	0.00%	0.00%	0.00%	0.00%	0.00%	0.00%	0.00%	0.00%	0.00%	0.00%	0.00%	0.00%	0.00%	0.00%	0.00%	0.00%	0.00%	0.00%
15-19 Yrs	0.00%	0.00%	0.00%	0.00%	0.00%	0.00%	0.00%	0.00%	0.00%	0.00%	0.00%	0.00%	0.00%	0.00%	0.00%	0.00%	0.00%	0.00%	0.00%	0.00%	0.00%	0.00%	0.00%	0.00%
20-24 Yrs	3.17%	0.00%	0.00%	0.00%	0.00%	0.00%	0.00%	0.00%	0.00%	0.00%	0.00%	0.00%	0.00%	0.00%	0.00%	0.00%	2.71%	0.00%	0.00%	0.00%	0.00%	0.00%	0.00%	0.00%
25-29 Yrs	9.64%	12.34%	17.22%	9.74%	12.22%	12.11%	12.08%	8.01%	9.39%	10.21%	10.04%	10.17%	7.51%	5.97%	6.56%	5.40%	7.24%	10.00%	10.00%	10.00%	10.00%	10.00%	10.00%	10.00%
30-34 Yrs	17.13%	15.14%	16.00%	18.96%	18.01%	19.68%	18.94%	25.43%	24.88%	18.93%	22.60%	16.50%	22.11%	26.80%	20.86%	23.51%	25.71%	21.62%	21.62%	21.62%	21.62%	21.62%	21.62%	21.62%
35-39 Yrs	6.48%	6.71%	8.98%	7.46%	9.43%	9.70%	10.35%	12.69%	11.48%	9.48%	12.65%	8.09%	10.27%	8.05%	10.57%	7.54%	8.87%	10.99%	10.99%	10.99%	10.99%	10.99%	10.99%	10.99%
40-44 Yrs	1.26%	1.28%	1.43%	0.96%	0.00%	2.06%	1.88%	1.46%	1.10%	2.89%	2.84%	3.20%	2.44%	1.94%	2.19%	1.76%	4.20%	2.11%	2.11%	2.11%	2.11%	2.11%	2.11%	2.11%
Total Females	2.45%	2.23%	2.63%	2.28%	2.32%	2.57%	2.50%	2.82%	2.62%	2.21%	2.65%	2.00%	2.13%	1.96%	1.87%	1.59%	1.97%	1.70%	1.59%	1.49%	1.38%	1.44%	1.48%	

Female population interpolated between 1990 and 2000 Census numbers

Use 2000 Census numbers for female population

**BIRTH RATE - Concord - Averages**

Maternal Age	1995-1997	1996-1997	1997-1999	1998-2000	1999-2001	AVERAGE
10-14 Yrs	0.00%	0.00%	0.00%	0.00%	0.00%	0.00%
15-19 Yrs	0.00%	0.00%	0.00%	0.00%	0.00%	0.00%
20-24 Yrs	0.00%	0.00%	0.00%	0.00%	0.00%	0.00%
25-29 Yrs	10.73%	10.04%	9.20%	9.88%	10.14%	10.00%
30-34 Yrs	21.35%	22.18%	23.08%	22.14%	19.34%	21.62%
35-39 Yrs	10.91%	11.52%	11.22%	11.21%	10.07%	10.99%
40-44 Yrs	1.80%	1.67%	1.82%	2.28%	2.98%	2.11%
Total Females	2.63%	2.66%	2.55%	2.49%	2.29%	2.53%