

Wayland Public Schools 2008-2009 Enrollment Report

Each year, on the first school day in October, we record the total number of students enrolled in our schools as part of the Massachusetts Department of Education's annual census of children attending the Commonwealth's public schools. This year, total enrollment in the Wayland Public Schools on October 1, 2008, was 2,759 students, 37 fewer students than were enrolled on October 1, 2007 and 101 fewer students that were enrolled on October 1, 2006.

ENROLLMENTS BY GRADE

October 1, 2008

| GRADE | CLAYPIT HILL | HAPPY HOLLOW | LOKER | MIDDLE SCHOOL | HIGH SCHOOL | TOTAL |
|-------------------|-----------------|-----------------|------------|------------------|----------------|--------------|
| * Pre-K | | | | | 96 | 96 |
| K | 0 | 0 | 178 | | | 178 |
| 1 | 112 | 80 | 0 | | | 192 |
| 2 | 113 | 90 | 0 | | | 203 |
| 3 | 125 | 79 | 0 | | | 204 |
| 4 | 122 | 77 | 0 | | | 199 |
| 5 | 135 | 92 | 0 | | | 227 |
| 6 | | | | 210 | | 210 |
| 7 | | | | 207 | | 207 |
| 8 | | | | 248 | | 248 |
| 9 | | | | | 222 | 222 |
| 10 | | | | | 229 | 229 |
| 11 | | | | | 223 | 223 |
| 12 | | | | | 217 | 217 |
| TOTAL K-12 | 607 | 418 | 178 | 665 | 891 | 2,759 |
| Oct. 1, 2007 K-12 | 524 | 337 | 352 | 680 | 903 | 2,796 |
| DIFFERENCE | 83 | 81 | -174 | -15 | -12 | -37 |

* Pre-kindergarten numbers are for information only and are not included in totals.

Budget and staffing levels for the 2008-2009 school year were built on the assumption that 2,724 students would be enrolled this year in Grades K-12. Actual enrollment is 35 students, or 1.285%, above the in-house projection made last October and used to develop the FY08 School Department budget.

At the elementary level, enrollment is 1,203, 10 students fewer than last year, and 20 students above a projected 1,183. Fourteen of those additional students are enrolled at the kindergarten level. At the Middle School, enrollment is 665, 15 fewer students than last year, and one student above a projection of 664. At the High School, enrollment is 14 students above a projection of 877, for a total of 891 students. Based on these figures, Wayland's method of using three-year cohort survival averages to determine enrollment projections in Grades 1-12 for budget purposes continues to be a reliable model to use.

PROJECTED vs. ACTUAL ENROLLMENTS, K-12

October 1, 2008

| GRADE | PROJECTED Oct. 1, 2008 | ENROLLED Oct. 1, 2008 | DIFFERENCE |
|-------------------|-----------------------------------|----------------------------------|-------------------|
| K | 164 | 178 | 14 |
| 1 | 186 | 192 | 6 |
| 2 | 212 | 203 | -9 |
| 3 | 206 | 204 | -2 |
| 4 | 188 | 199 | 11 |
| 5 | 227 | 227 | 0 |
| 6 | 211 | 210 | -1 |
| 7 | 205 | 207 | 2 |
| 8 | 248 | 248 | 0 |
| 9 | 213 | 222 | 9 |
| 10 | 226 | 229 | 3 |
| 11 | 216 | 223 | 7 |
| 12 | 222 | 217 | -5 |
| TOTAL K-12 | 2,724 | 2,759 | 35 |
| K-5 | 1,183 | 1,203 | 20 |
| 6-8 | 664 | 665 | 1 |
| 9-12 | 877 | 891 | 14 |

Of the 2,759 students enrolled in the Wayland Public Schools on October 1, 132 were Boston students participating in our METCO program. The number of Boston students enrolled in Wayland has remained fairly consistent over the past eight years.

ENROLLMENTS BY GRADE - METCO Students

October 1, 2008

| GRADE | CLAYPIT HILL | HAPPY HOLLOW | LOKER | MIDDLE SCHOOL | HIGH SCHOOL | TOTAL |
|-------------------|-------------------------|-------------------------|--------------|--------------------------|------------------------|--------------|
| * Pre-K | | | | | | 0 |
| K | | | 6 | | | 6 |
| 1 | 6 | 7 | | | | 13 |
| 2 | 2 | 4 | | | | 6 |
| 3 | 6 | 2 | | | | 8 |
| 4 | 8 | 5 | | | | 13 |
| 5 | 4 | 7 | | | | 11 |
| 6 | | | | 9 | | 9 |
| 7 | | | | 13 | | 13 |
| 8 | | | | 13 | | 13 |
| 9 | | | | | 15 | 15 |
| 10 | | | | | 9 | 9 |
| 11 | | | | | 9 | 9 |
| 12 | | | | | 7 | 7 |
| METCO K-12 | 26 | 25 | 6 | 35 | 40 | 132 |

Elementary enrollment declined for the eighth consecutive year, with all elementary grade totals ranging between 178 and 227 students. The largest change in elementary enrollment from October 1, 2007 to October 1, 2008 occurs in Grade 4, with a loss of 31 students, and in Grade 1, with a loss of 14 students. These are partially offset by an increase in enrollment of 19 students in Grade 5. This year's Kindergarten enrollment continues to be well below the 20-year average kindergarten class of 197 and includes 6 Boston students attending Wayland Public Schools as part of the METCO program.

COMPARATIVE ENROLLMENTS GRADES K-12

2007-2008 vs. 2008-2009

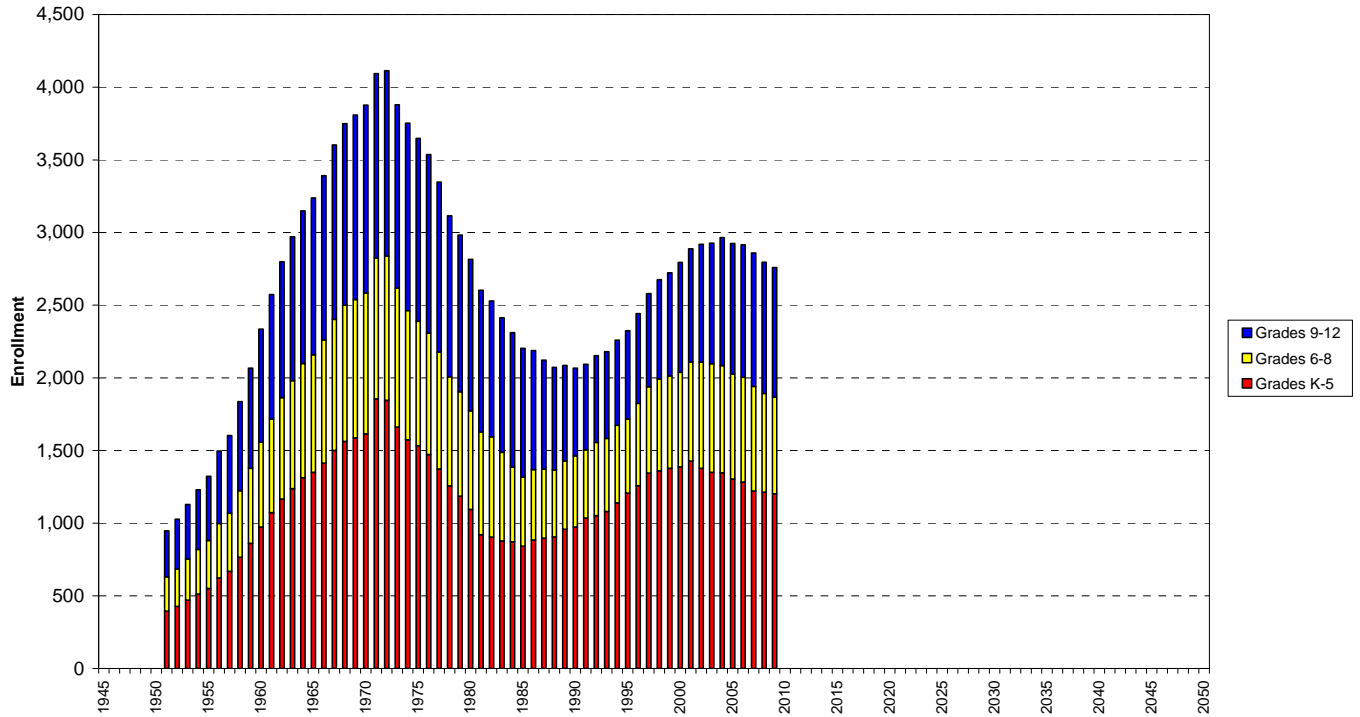
| GRADE | 2007-2008 | 2008-2009 | CHANGE |
|-------------------|--------------|--------------|------------|
| K | 174 | 178 | 4 |
| 1 | 206 | 192 | -14 |
| 2 | 202 | 203 | 1 |
| 3 | 193 | 204 | 11 |
| 4 | 230 | 199 | -31 |
| 5 | 208 | 227 | 19 |
| 6 | 208 | 210 | 2 |
| 7 | 248 | 207 | -41 |
| 8 | 224 | 248 | 24 |
| 9 | 232 | 222 | -10 |
| 10 | 221 | 229 | 8 |
| 11 | 222 | 223 | 1 |
| 12 | 228 | 217 | -11 |
| TOTAL K-12 | 2,796 | 2,759 | -37 |
| K-5 | 1,213 | 1,203 | -10 |
| 6-8 | 680 | 665 | -15 |
| 9-12 | 903 | 891 | -12 |

Enrollment at the Middle School fell by 15 students, to 665, down from a high of 748 in 2002-2003. Last year's Grade 8 cohort of 224 students was replaced by an incoming Grade 6 class of 210, which accounts for most of the enrollment loss. This is the sixth straight year of enrollment decline across Grades 6, 7 and 8.

Wayland High School's enrollment, fairly consistent since 2003-2004, fell by 12 students, marking the second year of decline in its enrollment since 1993. The largest drop in enrollment was seen in Grade 12, with this year's graduating class having 11 fewer students than last year's senior class.

This is the fifth successive year of K-12 enrollment decline in the Wayland Public Schools since 2003-2004. Whether or not this trend continues or not remains to be seen; however, the following graphic is indicative of Wayland Public Schools' enrollment falling on the downward side of the "baby boomlet" enrollment cycle that began around 1990 and peaked with a total enrollment of 2,965 students in the 2003-2004 school year.

Wayland Enrollment: 1951 - Present



ENROLLMENT HISTORY

| YEAR | K-5 | 6-8 | 9-12 | TOTAL | CHANGE | % CHANGE |
|-----------|-------|-----|-------|-------|--------|----------|
| 1970-1971 | 1,856 | 969 | 1,269 | 4,049 | | |
| 1971-1972 | 1,845 | 993 | 1,276 | 4,014 | -35 | -0.86% |
| 1972-1973 | 1,662 | 956 | 1,261 | 3,879 | -135 | -3.36% |
| 1973-1974 | 1,573 | 890 | 1,289 | 3,752 | -127 | -3.27% |
| 1974-1975 | 1,533 | 856 | 1,259 | 3,648 | -104 | -2.77% |
| 1975-1976 | 1,473 | 835 | 1,229 | 3,537 | -111 | -3.04% |
| 1976-1977 | 1,374 | 803 | 1,170 | 3,347 | -190 | -5.37% |
| 1977-1978 | 1,256 | 752 | 1,108 | 3,116 | -231 | -6.90% |
| 1978-1979 | 1,186 | 718 | 1,079 | 2,983 | -133 | -4.27% |
| 1979-1980 | 1,095 | 678 | 1,043 | 2,816 | -167 | -5.60% |
| 1980-1981 | 920 | 706 | 977 | 2,603 | -213 | -7.56% |
| 1981-1982 | 904 | 690 | 935 | 2,529 | -74 | -2.84% |
| 1982-1983 | 877 | 610 | 926 | 2,413 | -116 | -4.59% |
| 1983-1984 | 871 | 515 | 925 | 2,311 | -102 | -4.23% |
| 1984-1985 | 841 | 477 | 885 | 2,203 | -108 | -4.67% |
| 1985-1986 | 884 | 484 | 821 | 2,189 | -14 | -0.64% |
| 1986-1987 | 896 | 476 | 749 | 2,121 | -68 | -3.11% |
| 1987-1988 | 906 | 461 | 705 | 2,072 | -49 | -2.31% |
| 1988-1989 | 958 | 470 | 658 | 2,086 | 14 | 0.68% |
| 1989-1990 | 974 | 489 | 604 | 2,067 | -19 | -0.91% |
| 1990-1991 | 1,035 | 470 | 589 | 2,094 | 27 | 1.31% |
| 1991-1992 | 1,051 | 505 | 596 | 2,152 | 58 | 2.77% |
| 1992-1993 | 1,081 | 503 | 597 | 2,181 | 29 | 1.35% |
| 1993-1994 | 1,140 | 533 | 587 | 2,260 | 79 | 3.62% |
| 1994-1995 | 1,207 | 509 | 609 | 2,325 | 65 | 2.88% |
| 1995-1996 | 1,258 | 566 | 619 | 2,443 | 118 | 5.08% |
| 1996-1997 | 1,345 | 594 | 642 | 2,581 | 138 | 5.65% |
| 1997-1998 | 1,360 | 633 | 683 | 2,676 | 95 | 3.68% |
| 1998-1999 | 1,378 | 635 | 710 | 2,723 | 47 | 1.76% |
| 1999-2000 | 1,387 | 652 | 756 | 2,795 | 72 | 2.64% |
| 2000-2001 | 1,427 | 682 | 779 | 2,888 | 93 | 3.33% |
| 2001-2002 | 1,378 | 730 | 811 | 2,919 | 31 | 1.06% |
| 2002-2003 | 1,350 | 748 | 829 | 2,927 | 8 | 0.29% |
| 2003-2004 | 1,347 | 737 | 881 | 2,965 | 38 | 1.29% |
| 2004-2005 | 1,304 | 723 | 897 | 2,924 | -41 | -1.38% |
| 2005-2006 | 1,283 | 721 | 912 | 2,916 | -8 | -0.27% |
| 2006-2007 | 1,221 | 720 | 919 | 2,860 | -56 | -1.92% |
| 2007-2008 | 1,213 | 680 | 903 | 2,796 | -64 | -2.24% |
| 2008-2009 | 1,203 | 665 | 891 | 2,759 | -37 | -1.32% |

2009-2010 Enrollment Projections

A three-year cohort survival ratio is used to develop internal projections for the Wayland Public Schools. This method has been employed for many years by the administration to make enrollment projections and takes into account housing growth, migration, retention, withdrawals, transfers and births over the three previous school years. It produces highly reliable projections for enrollments in Grades 1-12; however, it is less accurate in predicting kindergarten enrollments which may be affected by postponed kindergarten enrollment, attendance at private full-day kindergarten programs in the area, adoption rates, and housing turnover.

There are several sources of data one can use as the basis for predicting kindergarten enrollment: census data from the Town Clerk, birth data from five years before kindergarten enrollment, and self-reported data from parents and local preschools. January 2008 census data collected by Wayland's Town Clerk shows a total of 149 children residing in Wayland whose birth dates fell between September 1, 2003 and August 31, 2004. This data is only as complete and accurate as the census filings received by the Town Clerk.

Traditionally, Wayland has used a three-year average of birth-to-kindergarten ratios; that is, using a three-year average of the ratios of the number of kindergarteners to the number of children born to Wayland residents five years earlier as reported to the Commonwealth's Department of Public Health Registry of Vital Records and Statistics. In 2003, there were 124 births reported for Wayland residents, the lowest number of recorded births in Wayland since 1981. The birth-to-kindergarten ratio calculation yields a projection of 165 kindergarteners for the 2008-2009 school year.

Finally, the district's Special Education Department collects information from local preschools and parents on age-eligible children for kindergarten enrollment. Current data collection shows a total of 165 children eligible to enroll in kindergarten next September and includes students whose kindergarten enrollment was deferred from September 2008 less an as-yet unidentified number of children whose enrollment may be postponed for another year.

These three sources of preschool population data are used to define a reasonable range in the number of kindergarteners we might expect in September 2009. Discounting the data collected by the Town census as lower than the other two, one might reasonably assume that kindergarten enrollment next year will be around 165 students, a reduction of 13 students below the current kindergarten population.

Using only the cohort survival method for all grades, next year's total enrollment in the Wayland Public Schools is expected to be 2,701 students, 58 fewer students than are enrolled for the current school year. While the High School enrollment is expected to increase by 14 students, elementary and Middle School enrollment will decrease by 49 and 23 students, respectively. Comparing current year enrollments to projected enrollments shows by grade where the decreases and increases will occur:

COMPARATIVE ENROLLMENTS K - 12

| GRADE | ACTUAL | PROJECTED | CHANGE | |
|---------------|--------------|--------------|------------|--------------|
| | 2008-2009 | 2009-2010 | | |
| K | 178 | 165 | -13 | -7.2% |
| 1 | 192 | 190 | -2 | -0.9% |
| 2 | 203 | 193 | -10 | -4.9% |
| 3 | 204 | 207 | 3 | 1.5% |
| 4 | 199 | 203 | 4 | 1.8% |
| 5 | 227 | 196 | -31 | -13.7% |
| 6 | 210 | 230 | 20 | 9.7% |
| 7 | 207 | 206 | -1 | -0.7% |
| 8 | 248 | 206 | -42 | -16.8% |
| 9 | 222 | 239 | 17 | 7.7% |
| 10 | 229 | 216 | -13 | -5.7% |
| 11 | 223 | 227 | 4 | 1.8% |
| 12 | 217 | 223 | 6 | 2.6% |
| TOTALS | 2,759 | 2,701 | -58 | -2.1% |
| K-5 | 1,203 | 1,154 | -49 | -4.1% |
| 6-8 | 665 | 642 | -23 | -3.4% |
| 9-12 | 891 | 905 | 14 | 1.5% |

Claypit Hill will see the largest decrease in student population, from 607 to 583, closely followed by the Middle School, which will fall to 642 students. Of all the schools, only the High School can expect an increase in the total number of students enrolled for 2009-2010.

PROJECTED ENROLLMENT (3-Year Cohort Survival Ratios)

2009-2010

| GRADE | CLAYPIT HILL | HAPPY HOLLOW | LOKER SCHOOL | MIDDLE SCHOOL | HIGH SCHOOL | TOTAL |
|---------------------|---------------|---------------|---------------|---------------|--------------|---------------|
| K | 0 | 0 | 165 | | | 165 |
| 1 | 111 | 79 | 0 | | | 190 |
| 2 | 113 | 80 | 0 | | | 193 |
| 3 | 115 | 92 | 0 | | | 207 |
| 4 | 124 | 78 | 0 | | | 203 |
| 5 | 120 | 76 | 0 | | | 196 |
| 6 | | | | 230 | | 230 |
| 7 | | | | 206 | | 206 |
| 8 | | | | 206 | | 206 |
| 9 | | | | | 239 | 239 |
| 10 | | | | | 216 | 216 |
| 11 | | | | | 227 | 227 |
| 12 | | | | | 223 | 223 |
| TOTAL K-12 | 583 | 406 | 165 | 642 | 905 | 2,701 |
| Oct. 1, 2007 K-12 | 607 | 418 | 178 | 665 | 891 | 2,759 |
| DIFFERENCE | -24 | -12 | -13 | -23 | 14 | -58 |
| % DIFFERENCE | -3.94% | -2.92% | -7.24% | -3.39% | 1.53% | -2.10% |

The in-house cohort survival projection is then compared to two others that use different methodologies for predicting enrollment – a straight five-year numerical average of the change in enrollment at each grade from year to year and a more complex projection prepared by NESDEC. The numerical average projection only considers the difference between number of births recorded five years earlier to the number of kindergarteners, yet it yields results very close to that of the district’s in-house cohort survival at all grade levels, for a total of 2,706 students. NESDEC’s calculations, using last year’s enrollment data, show greater variation in projections, for a total of 2,636. NESDEC calculations using this year’s October 1 enrollment data will not be available until later in the year.

COMPARATIVE ENROLLMENT PROJECTIONS

2009-2010

| GRADE | 2008-2009 | Internal Forecasts | | NESDEC** |
|--------------|--------------|--------------------|----------------|--------------|
| | Actual | 3-Year Cohort* | 5-Year Average | |
| K | 178 | 165 | 166 | 149 |
| 1 | 192 | 190 | 192 | 168 |
| 2 | 203 | 193 | 194 | 192 |
| 3 | 204 | 207 | 207 | 217 |
| 4 | 199 | 203 | 203 | 202 |
| 5 | 227 | 196 | 196 | 186 |
| 6 | 210 | 230 | 230 | 230 |
| 7 | 207 | 206 | 207 | 208 |
| 8 | 248 | 206 | 207 | 204 |
| 9 | 222 | 239 | 239 | 235 |
| 10 | 229 | 216 | 217 | 207 |
| 11 | 223 | 227 | 226 | 221 |
| 12 | 217 | 223 | 221 | 217 |
| TOTAL | 2,759 | 2,701 | 2,706 | 2,636 |

* Using 3-year average cohort ratios.

**Using January 2008 projections

Enrollment projections are used in the planning and development of the coming year’s budget. Staffing levels at all grade levels are predicated on the number of children reasonably expected to be enrolled at the start of the school year. Elementary enrollment numbers by school and by grade are used in conjunction with the School Committee’s Class Size Policy guidelines to determine the number of classroom sections needed at each grade level, which in turn drives the number of specialists (e.g. art, general music and physical education teachers) required at each school.

Based on enrollment projections, the district will need three fewer elementary classes at Claypit Hill than in 2008-2009, while the total number of sections at Happy Hollow and Loker Kindergarten will remain the same, with one grade level each at both Claypit Hill and Happy Hollow at or slightly above target class size for budgeting purposes.

PROJECTED ELEMENTARY CLASS SIZES
Using 3-Year Cohort Survival Ratios

| | PROJECTED | NUMBER | AVERAGE | TARGET |
|----------------------------|------------------|-------------------|-------------------|--------------------|
| <u>Claypit Hill</u> | TOTAL | CLASSROOMS | CLASS SIZE | UPPER LIMIT |
| Kindergarten | 0 | 0 | | 20 |
| Grade 1 | 111 | 6 | 18.5 | 20 |
| Grade 2 | 113 | 5 | 22.5 | 23 |
| Grade 3 | 115 | 5 | 23.1 | * 23 |
| Grade 4 | 124 | 5 | 24.8 | 25 |
| Grade 5 | <u>120</u> | <u>5</u> | <u>24.0</u> | 25 |
| Total | 583 | 26 | 22.4 | |
| <u>Happy Hollow</u> | | | | |
| Kindergarten | 0 | 0 | | 20 |
| Grade 1 | 79 | 4 | 19.8 | 20 |
| Grade 2 | 80 | 4 | 20.1 | 23 |
| Grade 3 | 92 | 4 | 23.0 | 23 |
| Grade 4 | 78 | <u>4</u> | 19.6 | 25 |
| Grade 5 | <u>76</u> | <u>3</u> | <u>25.3</u> | * 25 |
| Total | 406 | 19 | 21.4 | |
| <u>Loker</u> | | | | |
| Kindergarten | 165 | 9 | 18.3 | 20 |
| Grade 1 | 0 | 0 | | 20 |
| Grade 2 | 0 | 0 | | 23 |
| Grade 3 | 0 | 0 | | 23 |
| Grade 4 | 0 | 0 | | 25 |
| Grade 5 | <u>0</u> | <u>0</u> | | 25 |
| Total | 165 | 9 | 18.3 | |
| Total Elementary | 1,154 | 54 | 20.7 | |

* Average class size exceeds target upper limit by <1.0 students per class.

WAYLAND PUBLIC SCHOOLS

ENROLLMENT TRACKING from 1996 - 2008

and ENROLLMENT PROJECTIONS for FY10, FY11, FY12 and FY13

| Oct. 1 | ENROLLMENT TRACKING | | | | | | | | | | | | | PROJECTIONS | | | | | | | | |
|-----------------|---------------------|-------|-------|-------|-------|-------|-------|-------|-------|-------|-------|-------|--------|----------------------|----------------------|----------------------|----------------------|-----------------------|-----------------------------------|-------|-------|--|
| | 1996 | 1997 | 1998 | 1999 | 2000 | 2001 | 2002 | 2003 | 2004 | 2005 | 2006 | 2007 | 2008 | FY10 2 Yr. CSR | FY10 3 Yr. CSR | FY10 4 Yr. CSR | FY10 5 Yr. CSR | FY10 10 Yr. CSR | FY11 Using 3-Yr. CSR ('06-'08) | FY12 | FY13 | |
| Births | 164 | 177 | 162 | 150 | 168 | 136 | 143 | 131 | 124 | 105 | 129 | 110 | 63 YTD | | | | | | | | | |
| K | 242 | 228 | 219 | 209 | 232 | 186 | 197 | 203 | 170 | 187 | 193 | 174 | 178 | 160 | 165 | 158 | 155 | 156 | 165 | 140 | 172 | |
| Grade 1 | 228 | 250 | 227 | 234 | 219 | 242 | 191 | 219 | 221 | 188 | 194 | 206 | 192 | 193 | 190 | 192 | 192 | 190 | 176 | 177 | 150 | |
| Grade 2 | 228 | 225 | 245 | 233 | 241 | 219 | 244 | 200 | 218 | 232 | 186 | 202 | 203 | 195 | 193 | 195 | 194 | 195 | 191 | 177 | 178 | |
| Grade 3 | 229 | 229 | 232 | 237 | 241 | 250 | 231 | 253 | 207 | 220 | 235 | 193 | 204 | 208 | 207 | 207 | 208 | 208 | 197 | 195 | 181 | |
| Grade 4 | 200 | 229 | 230 | 235 | 243 | 242 | 249 | 225 | 257 | 202 | 213 | 230 | 199 | 205 | 203 | 202 | 203 | 204 | 205 | 195 | 193 | |
| Grade 5 | 217 | 203 | 225 | 239 | 251 | 242 | 238 | 247 | 231 | 254 | 200 | 208 | 227 | 195 | 196 | 196 | 198 | 200 | 200 | 202 | 192 | |
| Grade 6 | 207 | 220 | 209 | 227 | 246 | 255 | 246 | 233 | 240 | 234 | 253 | 208 | 210 | 233 | 230 | 230 | 228 | 229 | 199 | 203 | 205 | |
| Grade 7 | 202 | 209 | 223 | 205 | 228 | 244 | 254 | 247 | 241 | 243 | 225 | 248 | 207 | 207 | 206 | 207 | 209 | 209 | 225 | 195 | 199 | |
| Grade 8 | 185 | 204 | 203 | 220 | 208 | 231 | 248 | 257 | 242 | 244 | 242 | 224 | 248 | 207 | 206 | 207 | 206 | 208 | 205 | 225 | 194 | |
| Grade 9 | 182 | 176 | 199 | 204 | 216 | 207 | 226 | 240 | 237 | 231 | 230 | 232 | 222 | 242 | 239 | 239 | 237 | 240 | 199 | 198 | 216 | |
| Grade 10 | 153 | 179 | 176 | 198 | 204 | 216 | 198 | 227 | 241 | 234 | 224 | 221 | 229 | 216 | 216 | 217 | 218 | 219 | 232 | 193 | 193 | |
| Grade 11 | 175 | 154 | 175 | 173 | 196 | 198 | 213 | 204 | 218 | 233 | 228 | 222 | 223 | 229 | 227 | 226 | 224 | 227 | 214 | 230 | 192 | |
| Grade 12 | 132 | 173 | 160 | 181 | 162 | 190 | 192 | 210 | 201 | 214 | 237 | 228 | 217 | 220 | 223 | 222 | 221 | 220 | 227 | 214 | 230 | |
| Total | 2,580 | 2,679 | 2,723 | 2,795 | 2,887 | 2,922 | 2,927 | 2,965 | 2,924 | 2,916 | 2,860 | 2,796 | 2,759 | 2,710 | 2,701 | 2,698 | 2,692 | 2,706 | 2,636 | 2,544 | 2,495 | |
| Delta | 137 | 99 | 44 | 72 | 92 | 35 | 5 | 38 | -41 | -8 | -56 | -64 | -37 | -49 | -58 | -61 | -67 | -53 | -65 | -92 | -50 | |
| % Growth | 5.6% | 3.8% | 1.6% | 2.6% | 3.3% | 1.2% | 0.2% | 1.3% | -1.4% | -0.3% | -1.9% | -2.3% | -1.3% | -1.8% | -2.1% | -2.2% | -2.4% | -1.9% | -2.4% | -3.5% | -1.9% | |
| Totals | | | | | | | | | | | | | | | | | | | | | | |
| K-5 | 1,344 | 1,364 | 1,378 | 1,387 | 1,427 | 1,381 | 1,350 | 1,347 | 1,304 | 1,283 | 1,221 | 1,213 | 1,203 | 1,156 | 1,154 | 1,150 | 1,149 | 1,153 | 1,135 | 1,086 | 1,066 | |
| 6-8 | 594 | 633 | 635 | 652 | 682 | 730 | 748 | 737 | 723 | 721 | 720 | 680 | 665 | 647 | 642 | 644 | 643 | 646 | 630 | 622 | 598 | |
| 9-12 | 642 | 682 | 710 | 756 | 778 | 811 | 829 | 881 | 897 | 912 | 919 | 903 | 891 | 907 | 905 | 904 | 900 | 907 | 872 | 835 | 831 | |

Births for 2007 and 2008 are preliminary, as reported to Wayland's Town Clerk.