

# **WAYLAND HIGH SCHOOL PRELIMINARY DESIGN REPORT**

## **NEXT STEPS**

With the completion of this report the programming and preliminary design phase of this project is complete. The next step is to educate the citizens of Wayland about the findings of the study and its design recommendations in preparation for the late January town-wide votes. To this end the Committee and the design team will work together to prepare display boards, fact sheets, and a mailer that will be sent out to all Wayland voters. Three additional public forums are planned for the public to review the entire design in detail.

On Thursday, January 27<sup>th</sup>, 2005 there will be a Special Town Meeting vote to authorize \$4,232,000 for design and project management and all other expenses necessary to complete design through bidding.

If the project design funds are approved by the voters the proposed schedule in this report starts design immediately. The remainder of the winter months and spring will be an intensive period of review of the current design with the school departments and development into more detailed design. Of particular timing importance is the schedule for the initial design of testing strategies for the waste water treatment plant so that testing procedures can be approved by DEP and begun on the site by early April when ground water is highest. All other review with town boards and commissions as well as site and environmental permitting will be completed during this second design phase.

Near the end of the design and bid phase the School Committee would then be expected to propose a second round of override and Town Meeting approval to fund the construction portion of the project after construction bids are received.

See Figure 11.1 Schematic Design through Bidding Phase Work Plan for a look forward to the proposed activities, reviews, permitting, and deliverables of each future design phase. The construction schedule has not been shown on this figure but may be reviewed in detail in Chart 8.5 Project Schedule.

# WAYLAND HIGH SCHOOL PRELIMINARY DESIGN REPORT

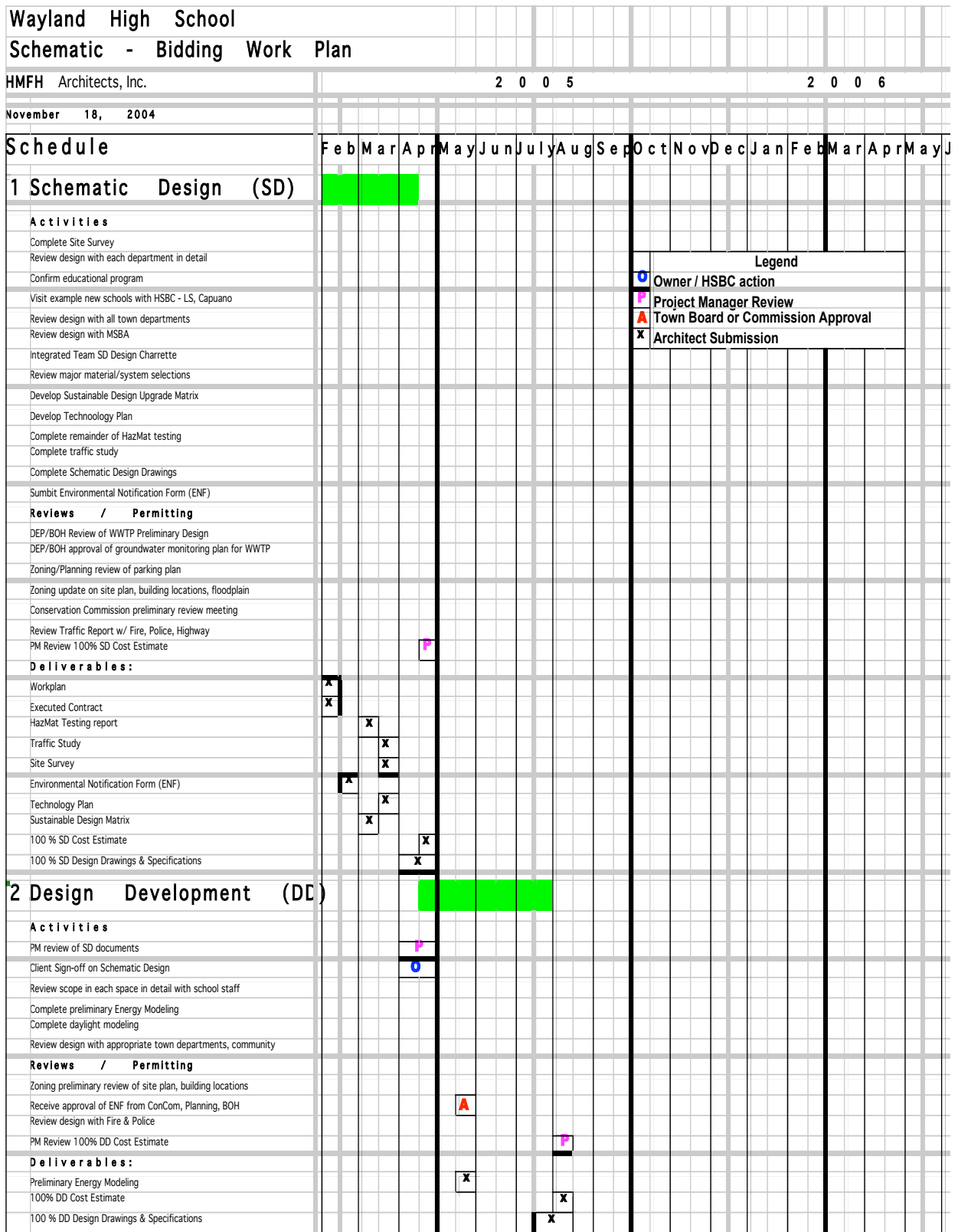
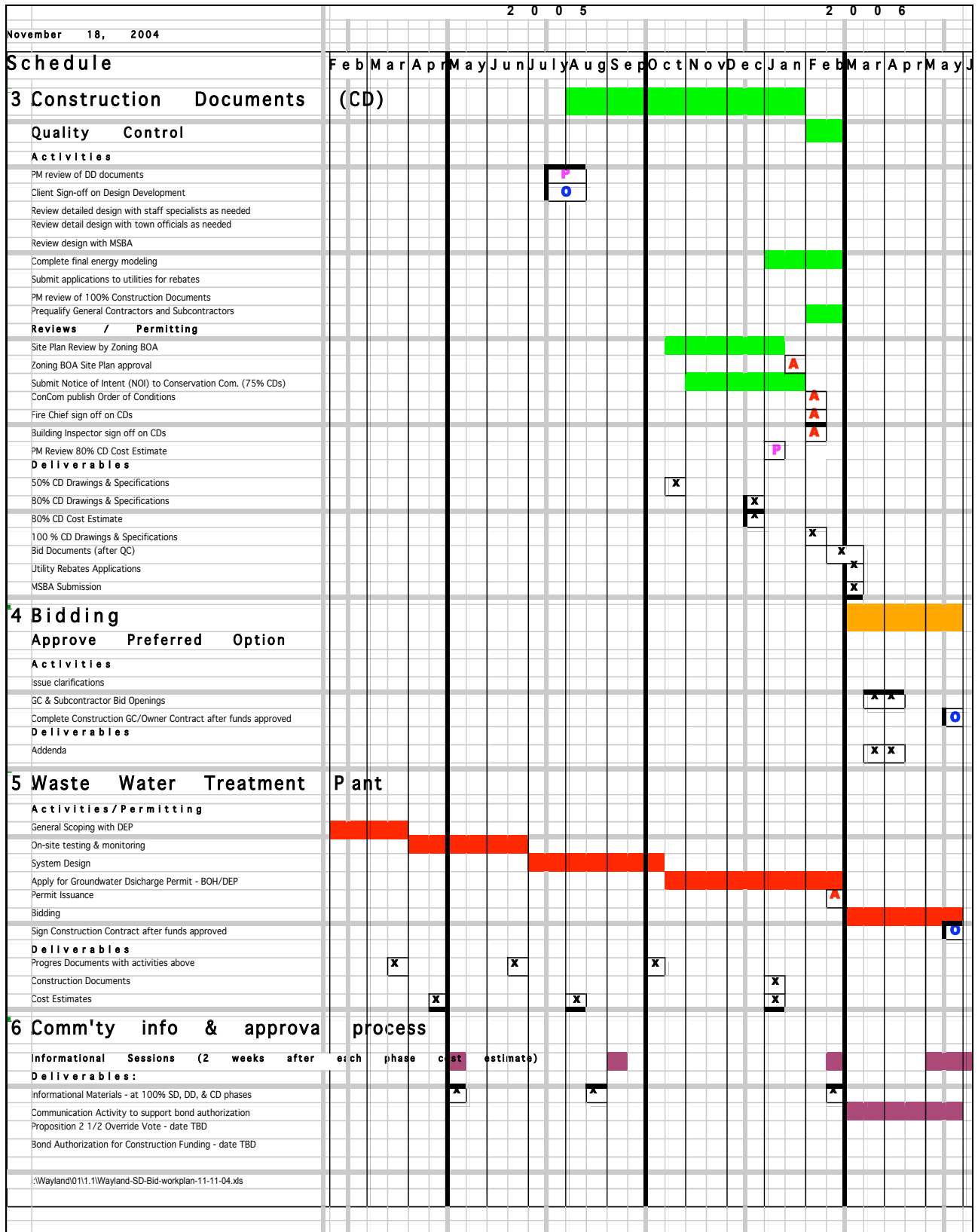


FIGURE 11.1 SCHEMATIC DESIGN THROUGH BIDDING PHASE WORK PLAN

# WAYLAND HIGH SCHOOL PRELIMINARY DESIGN REPORT



**FIGURE 11.1 SCHEMATIC DESIGN THROUGH BIDDING PHASE WORK PLAN – CONTINUED**